

ORIGINAL RESEARCH

Open Access

^{18}F -FDG PET standard uptake values of the normal pons in children: establishing a reference value for diffuse intrinsic pontine glioma

Marc H A Jansen^{1*}, Reina W Kloet², Dannis G van Vuurden^{1,3}, Sophie EM Veldhuijzen van Zanten¹, Birgit I Witte⁴, Serge Goldman⁵, W Peter Vandertop⁶, Emile FI Comans², Otto S Hoekstra², Ronald Boellaard² and Gert-Jan JL Kaspers¹

Abstract

Background: Positron emission tomography (PET) scanning with [^{18}F]fluorodeoxyglucose (^{18}F -FDG) is a useful diagnostic and prediction tool in brain tumors, but its value in childhood diffuse intrinsic pontine glioma (DIPG) is still unclear. For interpretation of ^{18}F -FDG PET results in DIPG, uptake values of the normal pons of children of increasing ages are mandatory. The aim of this study was to determine ^{18}F -FDG standard uptake value ratios (SUVr) of the normal pons and to compare these to those of DIPG.

Methods: We studied 36 subjects with a normal, non-affected pons (aged 5 to 23 years) and 6 patients with DIPG (aged 4 to 17 years) who underwent ^{18}F -FDG PET scanning. Magnetic resonance imaging (MRI) was co-registered to define the regions of interest. SUVr and SUVr_{max} for the pons/cerebellum (SUVr_{p/c}) and the pons/occipital lobe (SUVr_{p/o}) were calculated. Independent-samples *t* tests and Mann–Whitney *U* tests were used to compare the mean SUVr and Pearson's test for correlations.

Results: For the normal pons, mean SUVr_{p/c} and SUVr_{p/o} were 0.65 (±0.054) and 0.51 (±0.056), respectively. No significant correlations were found between the SUVr of the normal pons and sex, age, nor pontine volume. A modest but statistically significant correlation was found between SUVr and post-injection time acquisition timing. For DIPG, mean SUVr_{p/c} and SUVr_{p/o} were 0.74 (±0.20) and 0.65 (±0.30), respectively, while mean SUVr_{p(max)/c} and SUVr_{p(max)/o} were 1.95 (±0.48) and 1.81 (±0.20), respectively.

Conclusion: The SUVr of the unaffected pons are strikingly constant between children, irrespective of sex and age, and can therefore be well used as a reference value for ^{18}F -FDG PET studies in DIPG.

Keywords: Positron emission tomography; [^{18}F]fluorodeoxyglucose; Pontine glioma; Brain neoplasms; Reference values; Pons

Background

Positron emission tomography (PET) scanning with [^{18}F]fluorodeoxyglucose (^{18}F -FDG) provides information on glucose metabolism. ^{18}F -FDG PET positively correlates with an increasing WHO grade in astrocytomas [1]. In high-grade glioma (HGG), ^{18}F -FDG PET is an indicator of response to therapy and is used for PET-guided planning of

stereotactic brain biopsy [2-5]. In the past few years, ^{18}F -FDG PET studies have been introduced in diffuse intrinsic pontine glioma (DIPG) [6-10], a fatal disease that almost exclusively occurs in children [11]. Interestingly, ^{18}F -FDG metabolism in the majority of the DIPG was lower than that in the non-affected occipital lobe, but increased ^{18}F -FDG uptake correlated with decreased overall survival [10]. However, reference values of ^{18}F -FDG uptake in the normal pons of children of increasing age are mandatory to know what increased uptake is in the pons, and these data are lacking. Therefore, the aim of this study was to calculate the standard uptake value ratios (SUVr) for the pons/

* Correspondence: mh.jansen@vumc.nl

¹Division of Oncology and Hematology, Department of Pediatrics, VU University Medical Center, De Boelelaan 1118, Amsterdam 1007 MB, the Netherlands

Full list of author information is available at the end of the article

cerebellum ($SUV_{r_{p/c}}$) and for the pons/occipital lobe ($SUV_{r_{p/o}}$) in subjects with a normal pons and to investigate the influence of age, pontine size, and post-injection interval on the SUVr. The SUVr of the normal pons were then compared to the SUVr and SUVrmax of DIPG.

Methods

Subjects

To study the ^{18}F -FDG uptake of the normal pons, a retrospective cohort was used. Thirty-six children and adolescents aged 6 to 23 years who underwent ^{18}F -FDG PET scans for epilepsy surgery planning in the period of 2002 until 2012 were included. All controls had focal epilepsy and were in a non-ictal state at the moment of scanning. We inventoried the anti-epileptic agents used at the day of scanning. We excluded scans that revealed space-occupying lesions anywhere in the brain or epilepsy-induced changes in the pons, occipital lobe, and cerebellum and scans that did not meet the criteria as described under 'Scanning procedure'. The affected population consisted of six children with a newly diagnosed DIPG, based on criteria as described elsewhere from VU University Medical Center (VUmc), Amsterdam, the Netherlands, who underwent an ^{18}F -FDG PET scan at diagnosis [11]. The study was approved by the institutional review board of VUmc.

Scanning procedure

Scans of controls and DIPG patients were performed using an ECAT EXACT HR + PET scanner (Siemens/CTI, Knoxville, TN, USA), as previously described [12]. Patients and controls fasted for at least 4 h before the PET scan. Fifteen minutes before injection, they were positioned in a quiet, darkened room, with their eyes closed and no noise. After injection of 185 MBq ^{18}F -FDG (mean 187.2 MBq \pm 5.6), subjects remained in the quiet, darkened room for 35 min followed by a 10-min 2D transmission scan, acquired using retractable rotating ^{68}Ge sources, used for attenuation correction purposes. Approximately 45 min post-injection, a static 3D emission scan of 15 min was acquired. All emission scans were reconstructed using ordered subset expectation maximization (OSEM, 4 iterations, 16 subsets) with a Hanning filter with a cutoff at 0.5 times the Nyquist frequency and included the usual corrections for normalization, decay, dead time, attenuation, scatter, and randoms [13]. During reconstruction, a zoom factor of 2.123 and a matrix of 256×256 were used, resulting in voxel sizes of $1.2 \times 1.2 \times 2.4 \text{ mm}^3$. All subjects underwent structural magnetic resonance imaging (MRI) T1-T2 for diagnostic purposes. PET characteristics are summarized in Table 1.

Image analysis

Each patient's T1-weighted MR image was co-registered to their ^{18}F -FDG PET using VINCI software (Max Planck

Table 1 Baseline and PET characteristics of controls and patients with DIPG

	Controls	DIPG
Number of subjects	36 ^a	6
Male	21	2
Female	15	4
Median age (years)	12 (\pm 4)	6 (\pm 5)
0 to 5	0	2
6 to 10	15	3
11 to 15	14	0
16 to 20	5	1
20 to 25	2	0
Anti-epileptic drugs		
Valproic acid	3	0
Clobazam	4	0
Carbamazepine	12	0
Levetiracetam	6	0
Lamotrigine	9	0
Other	3	0
Histology		
Anaplastic astrocytoma		2 (biopsy)
Glioblastoma multiforme		1 (autopsy)
DIPG histology unknown		3
PET characteristics		
Mean ^{18}F -FDG dose (MBq)	187 (\pm 11)	170 (\pm 29)
Mean scan duration (min)	15 (\pm 0)	16 (\pm 2)
15 min	35	5
20 min	1	1
^{18}F -FDG uptake interval time		
Mean (min)	48 (\pm 16)	50 (\pm 27)
PET reconstruction parameters		
Method	OSEM	OSEM
Matrix 256	34	6
Matrix 128	2	0

OSEM, ordered subset expectation maximization. ^aThe controls consisted of 6 subjects with temporal lobe, 1 with parietal lobe, and 2 with frontal lobe epileptogenic foci; 5 with hypometabolism of the hippocampus; 5 with focal cortical dysplasia; 3 with mesial temporal sclerosis; and 14 without structural or ^{18}F -FDG PET epileptogenic foci.

Institute, Cologne, Germany) and subsequently used to manually define the regions of interest (ROIs) of the pons, occipital lobe, and cerebellum in normal subjects (Figure 1). For DIPG, the ROI was defined as the hypointense pontine lesion on T1 MRI, independent of contrast enhancement. The ROIs were projected on the PET, and the mean uptake (becquerel per cubic centimeter) was calculated for the entire defined ROI. Next, the SUV ratios were calculated by dividing the activity (becquerel per cubic centimeter) of the pons by the reference regions. Control group reference

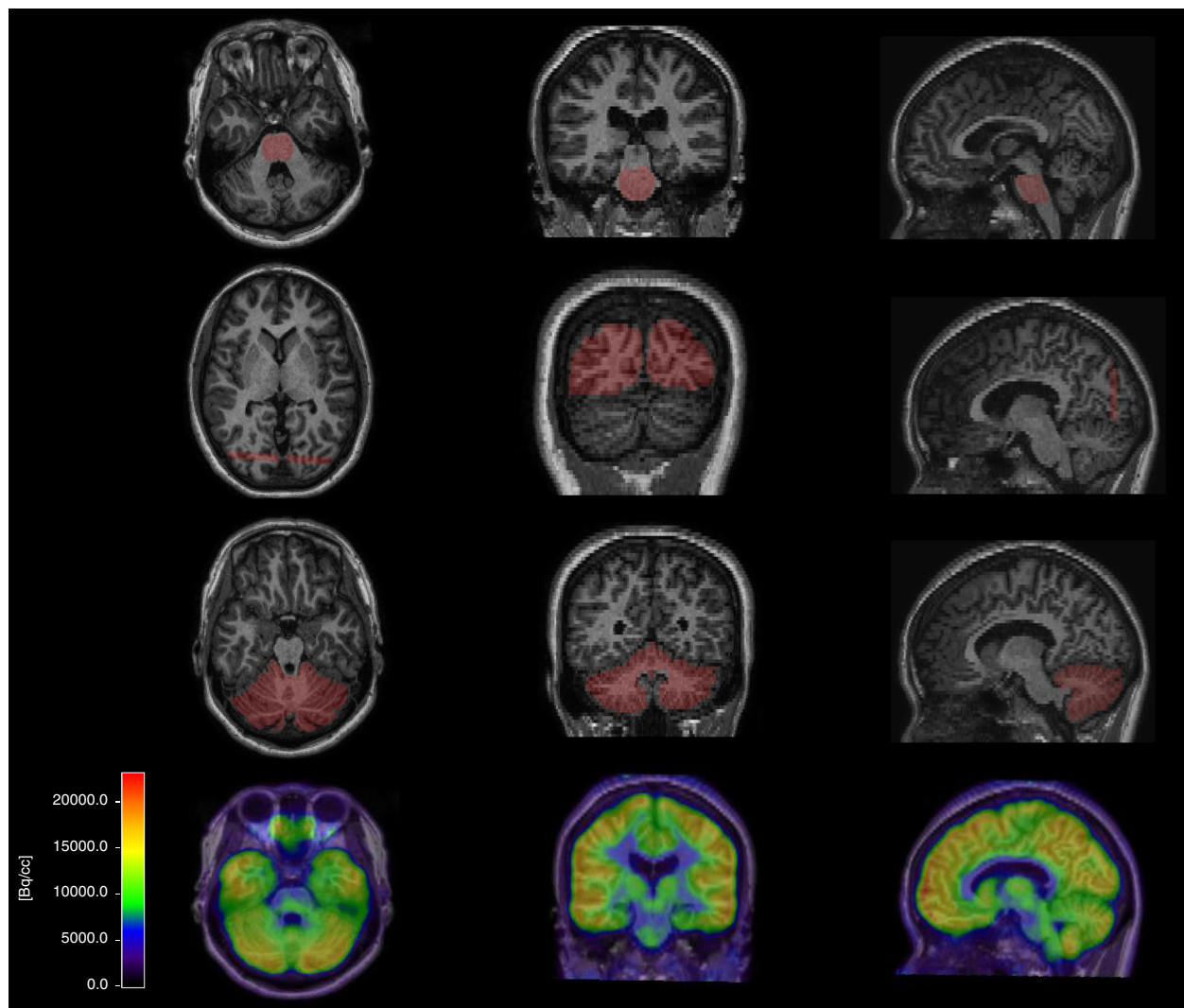


Figure 1 Co-registered T1-MR and FDG PET of a control. The ROI was defined on the co-registered T1-MR on sagittal, coronal, and axial slices. The upper row shows the ROI of the pons, the second row of the occipital lobe, and the third row of the cerebellum. For the occipital lobe, five slices were taken as the ROI from the coronal angle. The lower row shows the PET scan after T1-MRI fusion.

regions were the occipital lobe ($SUV_{r_{\text{pons}/\text{occipital}}} = SUV_{r_{p/o}}$) and cerebellum ($SUV_{r_{\text{pons}/\text{cerebellum}}} = SUV_{r_{p/c}}$). Temporoparietal lobe was excluded as a reference region in this control group as FDG uptake may have been affected by epilepsy-induced changes in this region. For DIPG, the maximal SUV ratios ($SUV_{r_{p(\text{max})/c}}$ and $SUV_{r_{p(\text{max})/o}}$) were calculated by dividing the hottest pixel of the pons (becquerel per cubic centimeter) by the mean uptake of the reference region (becquerel per cubic centimeter). Finally, SUV ratios were correlated to post-injection time, age, sex, and pontine volume (calculated on MRI) in the control cohort.

Statistics

SPSS 18.0 for Windows was used for statistical analyses. The range and distribution of the $SUV_{r_{p/c}}$ and $SUV_{r_{p/o}}$

are illustrated in histograms and boxplots. To determine whether the observations followed a normal (Gaussian) distribution, histograms and QQ plots were established. The mean, standard deviation, and corresponding confidence intervals were calculated accordingly. Based on a Gaussian distribution in both groups, independent-samples *t* tests were used to compare the mean SUV ratios of male versus female subjects. Non-parametric tests (Mann–Whitney *U* tests) were used to compare the SUV_{r} of DIPG versus the SUV_{r} of controls. Pearson's correlation test was used to correlate parameters with SUV ratios.

Results

Baseline characteristics

Baseline characteristics are summarized in Table 1.

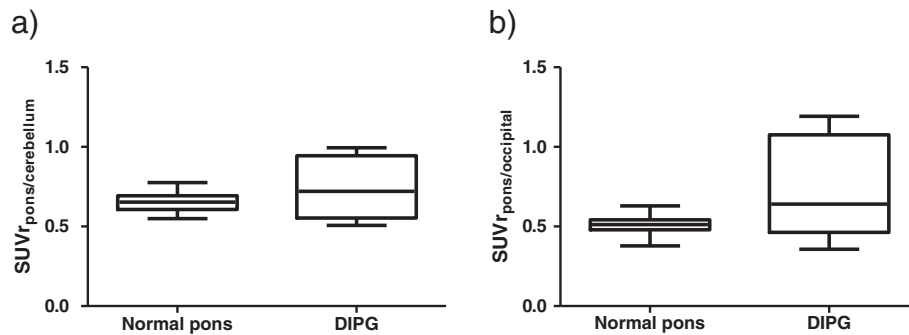


Figure 2 Boxplots of $SUVr_{p/c}$ (a) and $SUVr_{p/o}$ (b) for the normal pons versus DIPG. The SUVr deviation between controls is limited compared to that between patients with DIPG. The mean $SUVr_{p/c}$ and $SUVr_{p/o}$ are both not significantly higher in DIPG compared to controls. In the majority of the DIPG patients, the $SUVr_{p/c}$ and $SUVr_{p/o}$ are less than 1.0. Some patients with DIPG even show SUVr at the lower end of the SUVr of controls.

SUV ratios of the normal pons

Controls showed consistent SUV ratios of the normal pons: a mean $SUVr_{p/c}$ of 0.65 (± 0.054) and a mean $SUVr_{p/o}$ of 0.51 (± 0.056). $SUVr_{p/c}$ and $SUVr_{p/o}$ showed normal Gaussian distributions as confirmed by histograms and QQ plots (Additional file 1: Figure S1). Figure 2 shows the SUV ratios of the normal pons.

Pontine SUV ratios in relation to pontine volume, sex, and age

The average volume of the normal pons was 10 cm³ (± 1.4). The pontine volume linearly increased with age (regression coefficient 0.17, $r = 0.51$, $p = 0.001$; Figure 3a). There was no significant correlation between $SUVr_{p/o}$ ($r = 0.18$, $p = 0.28$; Figure 3b) and pontine volume nor

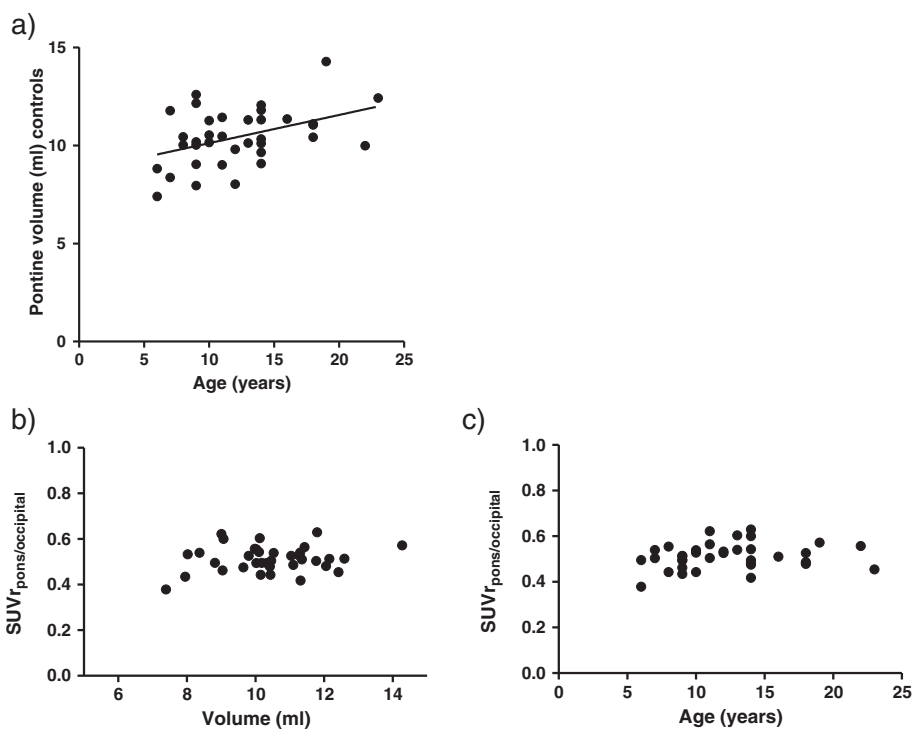
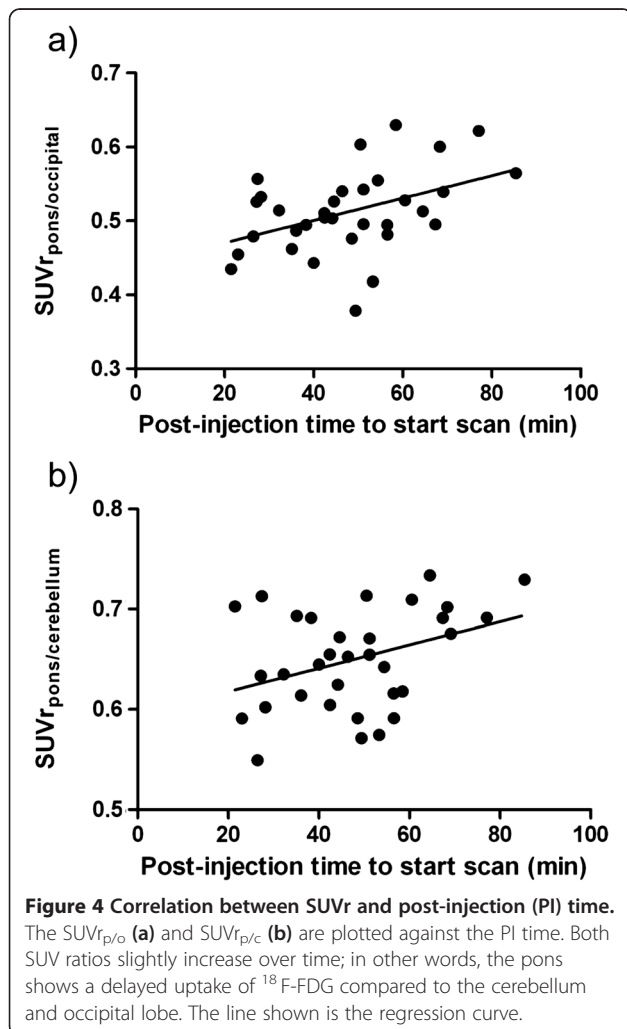


Figure 3 Correlation between SUVr and pontine volume, sex, and age. Age is significantly correlated with the pontine volume of controls as measured on MRI (a). The line shown is the regression curve. The $SUVr_{p/o}$ of controls and DIPG is plotted against pontine volume (b) and age (c). No correlation was found between $SUVr_{p/o}$ and these parameters. This also applies to $SUVr_{p/c}$ (figures not shown).

$SUV_{r_{p/c}}$ ($r = -0.13$, $p = 0.45$) and pontine volume. Furthermore, SUV ratios were found to be age independent, with r values of -0.17 ($p = 0.324$) and 0.18 ($p = 0.305$) for $SUV_{r_{p/c}}$ and $SUV_{r_{p/o}}$ (Figure 3c), respectively. We also found no significant difference between male and female subjects for $SUV_{r_{p/c}}$ ($p = 0.86$) nor $SUV_{r_{p/o}}$ ($p = 0.98$).

Pontine FDG SUV ratios as a function of post-injection uptake time

To determine whether uptake time influenced the ^{18}F -FDG uptake, we investigated the correlation between the SUV ratios and the post-injection uptake time in the control group (Figure 4). A modest positive correlation was found with both $SUV_{r_{p/c}}$ ($r = 0.37$, $p = 0.034$) and $SUV_{r_{p/o}}$ ($r = 0.43$, $p = 0.012$) and increasing post-injection time. The regression coefficients were small (0.0011/min and 0.0015/min, respectively).



^{18}F -FDG uptake in the normal pons versus DIPG

The average DIPG volume on MRI was 27 cm^3 (± 4.1). The mean $SUV_{r_{p/c}}$ in DIPG patients was 0.74 (± 0.20), whereas in controls a $SUV_{r_{p/c}}$ of 0.65 (± 0.054) was found ($p = 0.64$) (Figure 2). The mean $SUV_{r_{p/o}}$ in DIPG patients was 0.65 (± 0.30), which was 0.51 (± 0.056) in controls ($p = 0.37$). In only one out of six DIPGs, a $SUV_{r_{p/o}}$ and $SUV_{r_{p/c}} \geq 1.0$ was found. In three patients with increased local ^{18}F -FDG tumor uptake, the $SUV_{r_{\text{max}}}$ was calculated. The mean $SUV_{r_{p(\text{max})/o}}$ was 1.81 (± 0.20) and $SUV_{r_{p(\text{max})/c}}$ was 1.95 (± 0.48) which was significantly higher than the mean SUVr of the normal pons ($p = 0.042$ and $p = 0.005$).

Discussion

In an era where numerous drug trials in DIPG are ongoing or will be initiated shortly, it is essential to develop tools to predict disease evolution and to monitor response to therapy [14]. ^{18}F -FDG PET has the potential to be such a tool. However, the interpretation of ^{18}F -FDG PET results in DIPG is hampered by a lack of data on normal pontine glucose metabolism in children. We show in this study that ^{18}F -FDG SUV ratios of the normal pons versus those of the cerebellum and occipital lobe are very consistent in between controls, independent of sex, age, and pontine volume, and are therefore suitable as a reference value for ^{18}F -FDG PET studies in DIPG. Not only the pons of controls but also the pons infiltrated by tumor often showed lower ^{18}F -FDG uptake than the cerebellum and occipital lobe, a phenomenon that has been reported before [10]. Moreover, the mean SUVr of DIPG were not significantly higher than those of the normal pons, but this is probably due to the small DIPG sample size as the standard deviations were high. One may therefore question the role of ^{18}F -FDG PET in DIPG; however, the mean $SUV_{r_{\text{max}}}$ clearly increased in DIPG compared to the normal pons. Indeed, a recent study showed a significant correlation between increased ^{18}F -FDG tumor uptake and decreased survival in patients with this disease [10]. This correlation might be even stronger when considering that a $SUV_{r_{p/o}}$ in DIPG between 0.5 and 1.0 already reflects increased ^{18}F -FDG uptake in comparison with the normal pons. This consideration is not taken into account in studies using semi-quantitative measurements that lead to classification as 'hypo/iso/hypermetsabolic' compared to other brain areas [6-10].

An explanation for the limited ^{18}F -FDG uptake in DIPG compared to supratentorial HGG is that DIPGs are heterogeneous tumors with a mixed histologic tumor grade, as local uptake of the tracer is related to the presence of anaplastic features [11,15,16]. Calculating the $SUV_{r_{\text{max}}}$, reflecting the highest local uptake in the tumor, is helpful in those tumors with heterogeneous ^{18}F -FDG uptake. Other

explanations of the limited uptake are the frequently observed integrity of the blood–brain barrier in DIPG and the presence of white matter in the pontine region, which has low glucose metabolism [17].

We further investigated whether the time between injection and PET scanning had an influence on the ^{18}F -FDG uptake in the pons of controls compared to other brain areas. Indeed, $\text{SUV}_{\text{p/c}}$ and $\text{SUV}_{\text{p/o}}$ were positively correlated with increasing post-injection time. This suggests a delayed uptake of this tracer in the pons compared to the cerebellum and occipital lobe. However, the SUVr regression coefficients were small, and therefore, the influence of the uptake interval in clinical practice is negligible.

The main advantage of SUV ratios is that the possible errors in the measurement of weight or transcription and dose administered are minimized by the ratio between the two SUV measurements [18]. This applies especially for pediatric cancer, with low patient numbers and therefore often multi-national multi-center trials. In this study, we showed that SUV ratios of the normal pons are independent of sex, pontine volume, and age, although we had an under-representation of the youngest children (<5 years) in the control group. Although SUV ratios may give useful information in serial measurements, they have their limitations. In situations in which the ^{18}F -FDG uptake of the reference tissue varies, changes in SUV ratios can be misleading. For example, this may be the case when patients use steroids, which influence the glucose metabolism of the brain [19]. A methodological issue in this study was the use of epilepsy patients as controls, as ^{18}F -FDG PET data of healthy children could not be obtained due to ethical reasons regarding radiation exposure. We, however, do not expect significant changes in glucose metabolism of the pons due to epilepsy as all our subjects were in an inter-ictal state, which is not associated with changed glucose metabolism [20]. Furthermore, several anti-epileptic drugs including phenobarbital, phenytoin, benzodiazepines, and valproic acid have been associated with hypometabolism of the brain and especially the cerebellum and may therefore overestimate the $\text{SUV}_{\text{p/c}}$. Of these drugs, only valproic acid and clobazam were used in this study by, respectively, 3 and 4 out of 37 controls [21,22]. The lack of variance in between controls of both $\text{SUV}_{\text{p/c}}$ and $\text{SUV}_{\text{p/o}}$ presumes that the use of anti-epileptic drugs has not influenced our results significantly. In addition, the use of the cerebellum as a reference in epileptic patients in ^{18}F -FDG PET studies is not uncommon [23,24].

Future ^{18}F -FDG PET studies in DIPG may now compare SUVr and SUVmax in DIPG to the here reported mean SUV ratios of the normal pons. By comparing SUV ratios to the normal pons, smaller increases in glucose metabolism can be detected in comparison with semi-quantitative measurements, as DIPGs often show lower glucose metabolism than the reference brain tissue (occipital lobe). In this

way, the sensitivity and applicability of ^{18}F -FDG PET as a predictive and response monitoring tool for patients with DIPG can be increased.

Conclusion

We established a reference SUVr for ^{18}F -FDG uptake in the normal pons. SUV ratios are very consistent in between controls and independent of pontine volume, sex, or age. Not only was the ^{18}F -FDG uptake in the normal pons low compared to that in the reference brain areas, but also the uptake in DIPG was often lower than that in the occipital and cerebellar tissues. We encourage a study in controls to validate our results and propose that future ^{18}F -FDG PET trials in DIPG calculate SUV and SUV(max) ratios in order to relate these to the here reported mean SUV ratios of the normal pons. Smaller changes in the tumor's glucose metabolism can be detected in this way, which may have prognostic relevance for the patient.

Additional file

Additional file 1: Figure S1. $\text{SUV}_{\text{p/c}}$ and $\text{SUV}_{\text{p/o}}$ distributions in normal controls. Normal Gaussian distributions of both SUVs are presented in histograms (a, d) and boxplots (b, e). The Gaussian distribution was confirmed by QQ plots (c, f).

Competing interests

The authors declare that they have no competing interests.

Authors' contributions

MJ, RK, OH, RB, DV, GK, and WV contributed to the concept and study design. MJ, RK, OH, EC, SG, and SV collected the data. MJ and BW performed the statistical analysis. MJ, RK, OH, RB, GK, and BW were involved in the interpretation of the data. All authors were involved in the writing process and all approved the manuscript before submission.

Acknowledgements

DIPG research is funded by the Semmy and Egbers foundations. The sponsors had no role in the preparation and execution of the study and/or manuscript.

Author details

¹Division of Oncology and Hematology, Department of Pediatrics, VU University Medical Center, De Boelelaan 1118, Amsterdam 1007 MB, the Netherlands. ²Department of Radiology and Nuclear Medicine, VU University Medical Center, De Boelelaan 1117, Amsterdam 1081 HV, the Netherlands. ³Neuro-oncology Research Group, Cancer Center Amsterdam, De Boelelaan 1117, Amsterdam 1081 HV, the Netherlands. ⁴Department of Epidemiology and Biostatistics, VU University Medical Center, De Boelelaan 1118, Amsterdam 1081 HV, the Netherlands. ⁵Department of Nuclear Medicine, U.L. B.-Hôpital Erasme Brussels, 808 route de Lennik, Brussels 1070, Belgium. ⁶Neurosurgical Center Amsterdam, VU University Medical Center, De Boelelaan 1117, Amsterdam 1081 HV, the Netherlands.

Received: 20 September 2013 Accepted: 14 January 2014

Published: 28 January 2014

References

1. Di CG, Oldfield E, Bairamian D, Patronas NJ, Brooks RA, Mansi L, Smith BH, Kornblith PL, Margolin R: **Metabolic imaging of the brain stem and spinal cord: studies with positron emission tomography using ^{18}F -2-deoxyglucose in normal and pathological cases.** *J Comput Assist Tomogr* 1983, **7**:937–945.

2. Colavolpe C, Chinot O, Metellus P, Mancini J, Barrie M, Bequet-Boucard C, Tabouret E, Mundler O, Figarella-Branger D, Guedj E: **FDG-PET predicts survival in recurrent high-grade gliomas treated with bevacizumab and irinotecan.** *Neuro Oncol* 2012, **14**:649–657.
3. Colavolpe C, Metellus P, Mancini J, Barrie M, Bequet-Boucard C, Figarella-Branger D, Mundler O, Chinot O, Guedj E: **Independent prognostic value of pre-treatment 18-FDG-PET in high-grade gliomas.** *J Neurooncol* 2012, **107**:527–535.
4. Goldman S, Levivier M, Pirotte B, Brucher JM, Wikler D, Damhaut P, Dethy S, Brotchi J, Hildebrand J: **Regional methionine and glucose uptake in high-grade gliomas: a comparative study on PET-guided stereotactic biopsy.** *J Nucl Med* 1997, **38**:1459–1462.
5. Pirotte B, Goldman S, Massager N, David P, Wikler D, Lipszyc M, Salmon I, Brotchi J, Levivier M: **Combined use of 18 F-fluorodeoxyglucose and 11C-methionine in 45 positron emission tomography-guided stereotactic brain biopsies.** *J Neurosurg* 2004, **101**:476–483.
6. Bruggers CS, Friedman HS, Fuller GN, Tien RD, Marks LB, Halperin EC, Hockenberger B, Oakes WJ, Hoffman JM: **Comparison of serial PET and MRI scans in a pediatric patient with a brainstem glioma.** *Med Pediatr Oncol* 1993, **21**:301–306.
7. Kwon JW, Kim IO, Cheon JE, Kim WS, Moon SG, Kim TJ, Chi JG, Wang KC, Chung JK, Yeon KM: **Paediatric brain-stem gliomas: MRI, FDG-PET and histological grading correlation.** *Pediatr Radiol* 2006, **36**:959–964.
8. Pirotte BJ, Lubansu A, Massager N, Wikler D, Goldman S, Levivier M: **Results of positron emission tomography guidance and reassessment of the utility of and indications for stereotactic biopsy in children with infiltrative brainstem tumors.** *J Neurosurg* 2007, **107**:392–399.
9. Rosenfeld A, Etzl M, Bandy D, Carpenteri D, Giesekeing A, Dvorchik I, Kaplan A: **Use of positron emission tomography in the evaluation of diffuse intrinsic brainstem gliomas in children.** *J Pediatr Hematol Oncol* 2011, **33**:369–373.
10. Zukotynski KA, Fahey FH, Kocak M, Alavi A, Wong TZ, Treves ST, Shulkin BL, Haas-Kogan DA, Geyer JR, Vajapeyam S, Boyett JM, Kun LE, Poussaint TY: **Evaluation of 18 F-FDG PET and MRI associations in pediatric diffuse intrinsic brain stem glioma: a report from the pediatric brain tumor consortium.** *J Nucl Med* 2011, **52**:188–195.
11. Jansen MH, van Vuurden DG, Vandertop WP, Kaspers GJ: **Diffuse intrinsic pontine gliomas: a systematic update on clinical trials and biology.** *Cancer Treat Rev* 2012, **38**:27–35.
12. Brix G, Zaers J, Adam LE, Bellemann ME, Ostertag H, Trojan H, Haberkorn U, Doll J, Oberdorfer F, Lorenz WJ: **Performance evaluation of a whole-body PET scanner using the NEMA protocol. National electrical manufacturers association.** *J Nucl Med* 1997, **38**:1614–1623.
13. Boellaard R, Lubberink M, De Jong HW, Kropholler M, Lammertsma AA: **Application of various iterative reconstruction methods for quantitative 3D dynamic brain PET studies.** *IEEE Nucl Sci Symp Conf Rec* 2004, **4**:2553–2556.
14. Jansen MH, Kaspers GJ: **A new era for children with diffuse intrinsic pontine glioma: hope for cure?** *Expert Rev Anticancer Ther* 2012, **12**:1109–1112.
15. Goldman S, Levivier M, Pirotte B, Brucher JM, Wikler D, Damhaut P, Stanus E, Brotchi J, Hildebrand J: **Regional glucose metabolism and histopathology of gliomas. A study based on positron emission tomography-guided stereotactic biopsy.** *Cancer* 1996, **78**:1098–1106.
16. Caretti V, Jansen MH, van Vuurden DG, Lagerweij T, Bugiani M, Horsman I, Wessels H, Van D, Cloos J, Noske DP, Vandertop WP, Wesseling P, Wurdinger T, Hulleman E, Kaspers GJ: **Implementation of a multi-institutional diffuse intrinsic pontine glioma autopsy protocol and characterization of a primary cell culture.** *Neuropathol Appl Neurobiol* 2012, **39**:426–436.
17. Hargrave D, Chuang N, Bouffet E: **Conventional MRI cannot predict survival in childhood diffuse intrinsic pontine glioma.** *J Neurooncol* 2008, **86**:313–319.
18. Boellaard R: **Need for standardization of 18 F-FDG PET/CT for treatment response assessments.** *J Nucl Med* 2011, **52**(Suppl 2):935–1005.
19. Roelcke U, Blasberg RG, von AK, Hofer S, Vontobel P, Maguire RP, Radu EW, Herrmann R, Leenders KL: **Dexamethasone treatment and plasma glucose levels: relevance for fluorine-18-fluorodeoxyglucose uptake measurements in gliomas.** *J Nucl Med* 1998, **39**:879–884.
20. Theodore WH, Fishbein D, Dietz M, Baldwin P: **Complex partial seizures: cerebellar metabolism.** *Epilepsia* 1987, **28**:319–323.
21. Theodore WH: **Antiepileptic drugs and cerebral glucose metabolism.** *Epilepsia* 1988, **29**(Suppl 2):S48–S55.
22. Leiderman DB, Balish M, Bromfield EB, Theodore WH: **Effect of valproate on human cerebral glucose metabolism.** *Epilepsia* 1991, **32**:417–422.
23. Ferrie CD, Marsden PK, Maisey MN, Robinson RO: **Visual and semiquantitative analysis of cortical FDG-PET scans in childhood epileptic encephalopathies.** *J Nucl Med* 1997, **38**:1891–1894.
24. Ferrie CD, Marsden PK, Maisey MN, Robinson RO: **Cortical and subcortical glucose metabolism in childhood epileptic encephalopathies.** *J Neurol Neurosurg Psychiatry* 1997, **63**:181–187.

doi:10.1186/2191-219X-4-8

Cite this article as: Jansen et al.: ¹⁸F-FDG PET standard uptake values of the normal pons in children: establishing a reference value for diffuse intrinsic pontine glioma. *EJNMMI Research* 2014 **4**:8.

Submit your manuscript to a SpringerOpen® journal and benefit from:

- Convenient online submission
- Rigorous peer review
- Immediate publication on acceptance
- Open access: articles freely available online
- High visibility within the field
- Retaining the copyright to your article

Submit your next manuscript at ► springeropen.com